



Pinnoitus-Pekka Open 2024

Oil Per Board: 45 uL Oil Pattern Distance: 44 Feet Volume Oil Total: 24.975 mL Total Boards Crossed: 555 Boards

Forward Oil Total: 15.435 mL
Forward Boards Crossed: 343 Boards

Reverse Oil Total: 9.54 mL
Reverse Boards Crossed: 212 Boards

Kegel Defense + Kegel Fire

Conditioner:
Type In or Select One

TransferType:
Type In or Select One

Forward

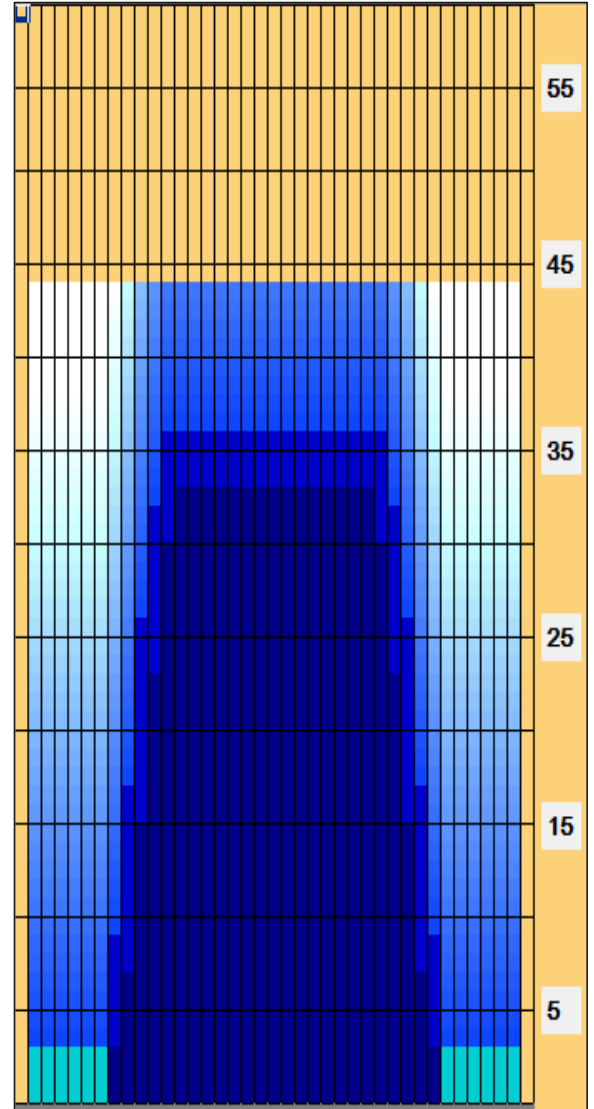
Reverse

Combined

Buff

	Start	Stop	Loads	Speed	Crossed	Start	End	Feet	T.Oil
1	2L	2R	3	14	111	0.0	3.9	3.9	4995
2	9L	9R	2	14	46	3.9	7.8	3.9	2070
3	10L	10R	3	18	63	7.8	15.4	7.6	2835
4	11L	11R	3	18	57	15.4	23.0	7.6	2565
5	12L	12R	3	18	51	23.0	30.6	7.6	2295
6	13L	13R	1	18	15	30.6	33.1	2.5	675
7	2L	2R	0	22	0	33.1	39.0	5.9	0
8	2L	2R	0	26	0	39.0	44.0	5.0	0

	Start	Stop	Loads	Speed	Crossed	Start	End	Feet	T.Oil
1	2L	2R	0	30	0	44.0	36.0	-8.0	0
2	12L	12R	1	26	17	36.0	32.4	-3.6	765
3	11L	11R	2	22	38	32.4	26.2	-6.2	1710
4	10L	10R	3	22	63	26.2	16.9	-9.3	2835
5	9L	9R	3	18	69	16.9	9.3	-7.6	3105
6	8L	8R	1	14	25	9.3	7.4	-1.9	1125
7	2L	2R	0	14	0	7.4	0.0	-7.4	0



Arrow Zone Ratios

Item	2-5L:16L-20	6-10L:16-20	11-15L:16L-20	16L-20:20-16R	16L-20:20-16R	20-16R:15-11R	20-16R:10-6R	20-16R:5-2R
ul Arrow	135	306	1071	1125	1125	1071	306	135
Zone Ratio	8.33	3.68	1.05	1	1	1.05	3.68	8.33

Track Zone Ratios

Item	3L-7L:18L-18R	8L-12L:18L-18R	13L-17L:18L-18R	18L-18R:17R-13R	18L-18R:12R-8R	18L-18R:7R-3R
Description	Outside Track:Middle	Middle Track:Middle	Inside Track:Middle	Middle: Inside Track	Middle:Middle Track	Middle:Outside Track
Track Zone Ratio	8.33	1.74	1	1	1.74	8.33

